



WHEN IT COMES TO PROTECTING YIELD, OBERON® PUTS THE PERCENTAGES IN YOUR FAVOR.

o·b·e·r·o·n®

OBERON INSECTICIDE/MITICIDE IN CORN

Oberon® is highly effective against all developmental stages of mites including eggs, nymphs and female adults. Because of its excellent residual activity and novel mode of action to control mites resistant to other insecticides, Oberon insecticide/miticide is an ideal component of pest management programs.

BENEFITS

- Dependable yield protection against mites
- Flexible application timing with activity against all mite development stages
- Excellent fit in IPM systems, having minimal effect on predatory mites or other beneficial insects when used as directed
- Long residual control

ACTIVITY SUMMARY

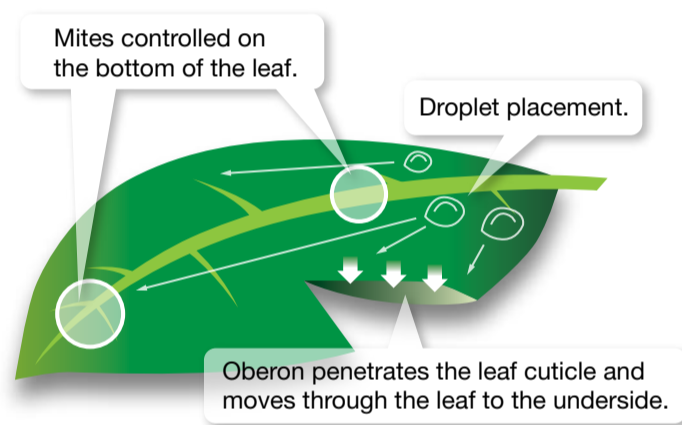
The mode of action in Oberon has been characterized as a Lipid Biosynthesis Inhibitor (LBI) and is the only Group 23 MOA registered for use in corn.

The translaminar movement of Oberon allows it to control mites on the underside of corn leaves.

Oberon is active by ingestion against mites feeding on the leaf surfaces of treated corn plants. This feeding MOA prevents exposure to beneficial organisms.

Oberon should be your miticide of choice to protect your corn yield because of its mode of action, high efficacy, long residual control and fit into IPM systems.

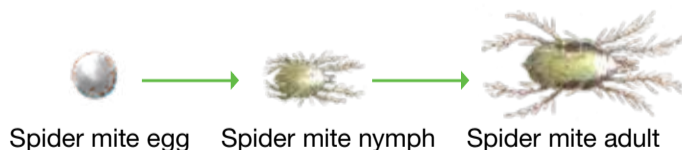
HOW OBERON CONTROLS MITES ON CORN LEAVES



PLANT MOBILITY

- Translaminar activity
Oberon moves through the leaf epidermis and mesophyll to control mites not directly exposed to sprayed surfaces.
- Systemicity
Oberon hydrolyzes and moves through the phloem to unsprayed leaf and plant parts.

SPIDER MITE GROWTH CYCLE



DEPARTMENT:	Art Director	Copywriter	Acct. Manager	Studio Artist	Proofreader	Traffic	Production
APPROVAL:							



PEST SPECTRUM

Oberon® is specifically effective against twospotted spider mites and Banks grass mites. Oberon has its highest activity against the immature stages (nymphs) of pest development. Female adult pests treated with Oberon show a reduction in fertility. There is also a pronounced ovicidal effect in mites.

APPLICATION GUIDELINES FOR CORN

Oberon 4 SC is compatible with many other crop protection products including herbicides and micronutrients.

Tankmixes: Tankmixing with organophosphate insecticides, such as dimethoate or chlorpyrifos, has been shown to improve early initial knockdown of established colonies.

The use of pyrethroid products, such as bifenthrin, prior to or in combination with Oberon has been shown to adversely affect beneficial predators and is not recommended.

Use Rate: Oberon 4 SC = 4 fl. oz. to 8 fl. oz./A per application; maximum of 8.5 fl. oz./A per season. Higher use rates (6–8 fl. oz./A) are recommended to help maximize residual control of pre-tassel applications and provide better control under conditions conducive for rapid mite development or under periods of adverse environmental conditions such as high temperatures or plant drought stress.

Adjuvant: The addition of COC and CSO at 1 pt./A to 2 pt./A will improve control by enhancing coverage and penetration of leaf tissue. The use of High Surfactant Oil Concentrate (HSOC) has been shown to reduce efficacy and should be avoided.

Spray Volume: Minimum 5 GPA by air and 10 GPA by ground. Higher GPA will provide better spider mite control. Thorough coverage of foliage is required for optimal control.

Application: Air, ground or chemigation. Depending on dosage applied, two applications are allowed per season at 14-day intervals.

Recommended Application Timing: Apply in the early development of mite populations. Maximum performance is achieved when applications are made early (quarter-sized colonies), prior to the establishment of a damaging population.

Control: Performance evaluations should be made 8 to 10 days following application.

Residual: Preventive-type applications will provide longer residual control than curative applications.

Rainfast: 1 hour/upon drying.

PHI: 30 days for grain or stover; 5 days for silage.

IMPORTANT: This bulletin is not intended to provide adequate information for use of these products. Read the label before using these products. Observe all label directions and precautions while using these products.