



# Flint® Extra Fungicide

## Group 11 Fungicide

Flint® Extra fungicide is a proven, dependable fungicide that offers enhanced value for growers.

### /// BENEFITS

- **Proven Efficacy**  
Provides proven broad-spectrum control of key diseases in various crops.
- **Excellent Compatibility**  
Good crop safety history and mix compatibility with other products, making it an excellent fit for many Integrated Pest Management (IPM) programs.
- **Easy to Use**  
Low use rates in an easy-to-use liquid 500 SC formulation.

### /// THE POWER OF FLINT® EXTRA FUNGICIDE

The active ingredient in Flint Extra rapidly penetrates the waxy layer of the plant tissues and redistributes on the plant surface, providing locked-in protection against disease, even within hard-to-penetrate plant canopies.

The fungicide stops both early and developing fungal diseases by preventing initial infection as well as secondary spread of diseases. This makes Flint Extra a valuable tool in your disease management program.

### /// FLINT® EXTRA FUNGICIDE QUICK FACTS

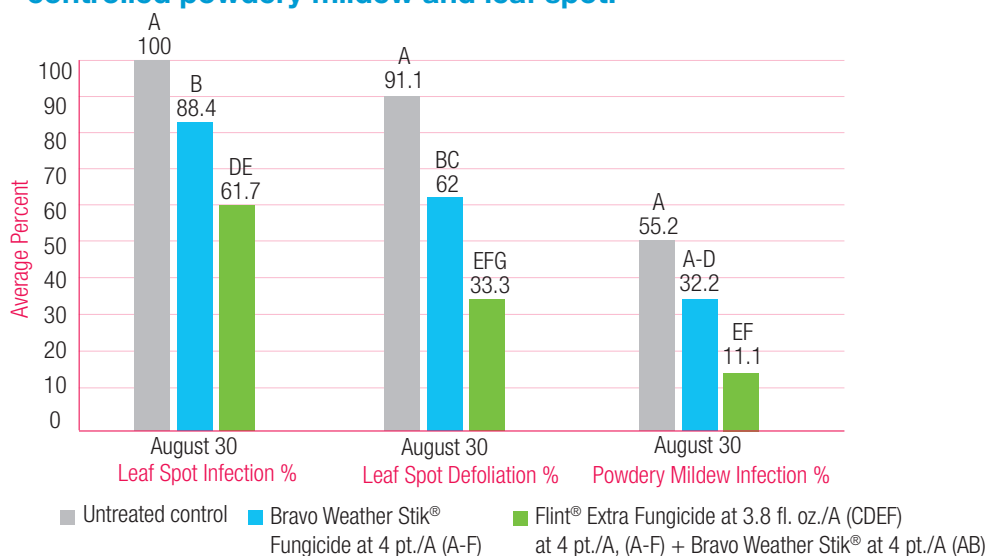
- **Active Ingredient:** Trifloxystrobin
- **FRAC:** Group 11 Fungicide
- **Single Word:** Caution
- **REI:** 12 Hours
- **Use Rate:** 2.0 to 4.7 fl. oz./A, depending on crop

### /// RECOMMENDATION FOR USE IN GRAPES

In case of known Strobilurin resistance Bayer recommends a maximum of one solo Strobilurin application in a tank-mix. From a resistance management point of view, Strobilurins are still a valuable tool for growers since their use in a tank-mix and rotational program reduces the pressure on other fungicides (*FRAC Group 7, 3 etc.*).

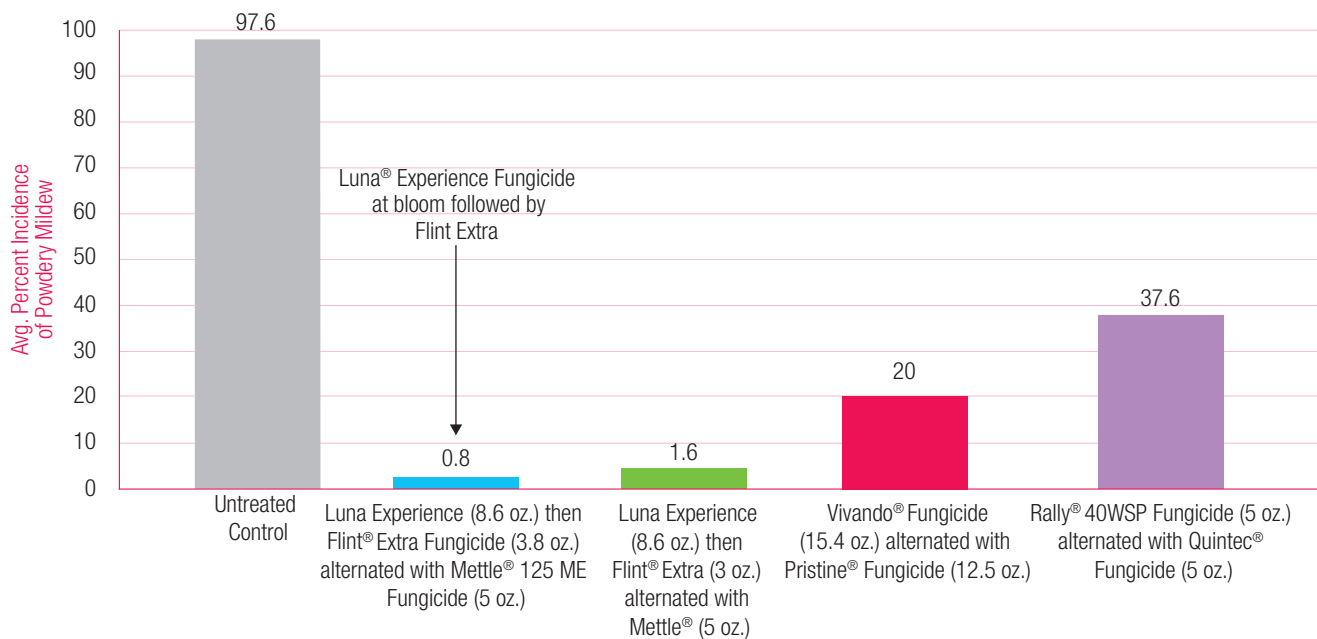
Registered Crops	Key Diseases
• Brassica Vegetables	• Alternaria
• Citrus	• Anthracnose
• Cucurbit Vegetables	• Black Rot
• Fruiting Vegetables	• Botryosphaeria
• Grapes	• Botrytis
• Hops	• Cercospora Leaf Spot
• Leafy Vegetables	• Cherry Leaf Spot
• Pome Fruit	• Early Blight
• Potatoes	• Fly Speck
• Rice	• Greasy Spot
• Root Vegetables	• Melanose
• Stone Fruit	• Phomopsis
• Strawberries	• Plectosporium Blight
• Sugar Beets	• Post-Bloom Fruit Drop
• Tree Nuts	• Powdery Mildew
	• Rice Blast
	• Rust
	• Scab
	• Septoria
	• Shot Hole
	• Sooty Blotch
	• Stemphyllium

## In cherries, Flint® Extra Fungicide with Bravo Weather Stik® controlled powdery mildew and leaf spot.



Means within a column followed by the same letter are not significantly different according to Fisher's Protected LSD (P≤0.05). Trial conducted in Traverse City, MI, by George Sundin, MSU, 2018.

## In grapes, Luna Experience® Fungicide followed by Flint® Extra Fungicide controlled powdery mildew to trace levels.



Trial conducted near Walnut Grove by UCCE, University of California, Davis, 2016. Rates are on an oz. per acre basis. All treatments with adjuvant (not shown). Applications on 14-day interval. Bayer programs began with Microthiol® Dispers® 5 lb. up to bloom on 7-day interval. Other programs were alternated full season.

**IMPORTANT:** This bulletin is not intended to provide adequate information for use of these products. Read the label before using these products. Observe all label directions and precautions while using these products.

For more information, visit [www.CropScience.Bayer.us](http://www.CropScience.Bayer.us).

ALWAYS READ AND FOLLOW PESTICIDE LABEL DIRECTIONS. Not all products are registered in all states and may be subject to use restrictions. The distribution, sale, or use of an unregistered pesticide is a violation of federal and/or state law and is strictly prohibited. Check with your local dealer or representative for the product registration status in your state. Bayer, Bayer Cross, Flint® and Luna Experience® are registered trademarks of Bayer Group. All other trademarks are the property of their respective owners. For additional product information call toll-free 1-866-99-BAYER (1-866-992-2937) or visit our website at [www.BayerCropScience.us](http://www.BayerCropScience.us). Bayer CropScience LP, 800 North Lindbergh Boulevard, St. Louis, MO 63167. ©2021 Bayer Group. All rights reserved. 1T022110115

